

# DAN-doors

## DAN-matic 1800 Sliding Rail



**Door weight up to 250 or 400 kg**

### Quality sliding door systems for your door production

Offering you a number of proven solutions, DAN-doors is our partner in providing durable and state of the art door solutions.

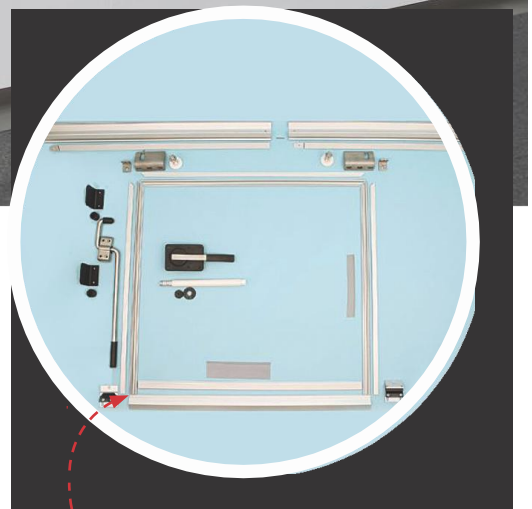
One of the major reasons why you can rely on DAN-doors hardware is, that the very same components are used in the many highly esteemed doors, which leave our factory every day.

**The DAN-matic 1800 sliding rail is designed for door weights up to 250 kg (with 2 nos. rollers) or up to 400 kg (with 4 nos. rollers).**

The versatile sliding rail system is made of aluminium with anticorrosive surface (anodized), and is available for 1-leaf as well as 2-leaf doors.

The DAN-doors sliding rails can be used in all types of industry, but are designed with focus on the high hygienic standards that are required in the food industry and related sectors. Consequently the sliding rails are especially suitable for chill and freezer applications.

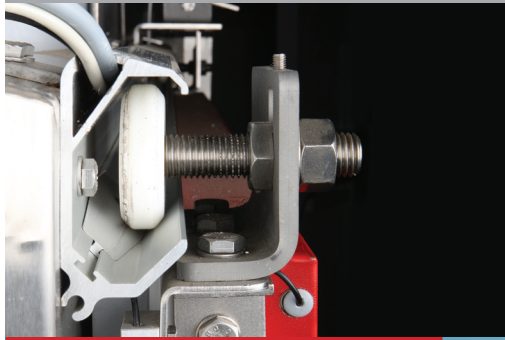
To ensure quick installation in your door production, the DAN-matic sliding door systems are supplied ready for installation to fit your exact clear opening dimensions.



*The DAN-doors sliding door systems are complete with all necessary hardware like rail, handles, gaskets, mounting fittings and off course a detailed installation guide.*

# DAN-doors

## DAN-matic 1800 Sliding Rail



### Unique rail design

Unique sliding rail design with built-in recess for positive sealing against door frame and floor under all conditions (industry, chill or freeze).



### Bottom guide system

Floor mounted bottom guide system allows for friction free movement of the door and further ensures the positive sealing.

Optional: wall mounted version.



### Stainless steel handles

The stainless steel handle system allows for easy manual opening of doors from both sides, securing a good working environment for employees.

Choose among different handle options.



### Gasket system

Easy to exchange gasket system in food-safe material type TPE.

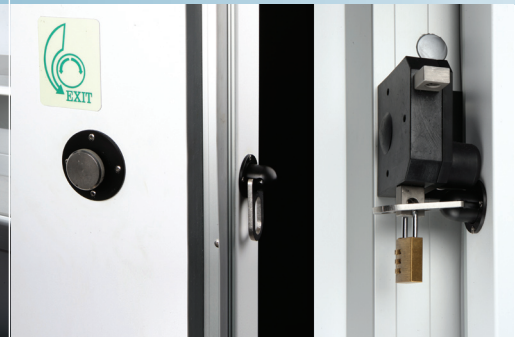
Replaceable without special tools.



### Nylon rollers

Nylon rollers and stainless steel brackets give minimum friction/noise and maximum strength.

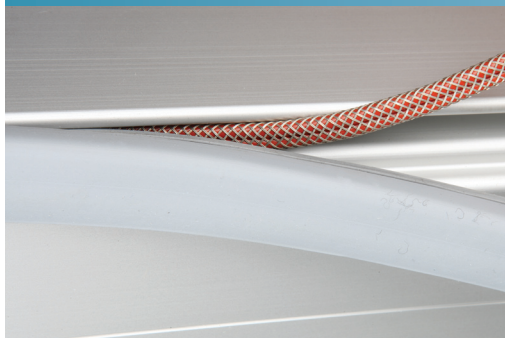
All bolts, nuts etc. in stainless steel for optimal food hygiene and serviceability.



### Locking systems

A DAN-doors locking solution is safe for traffic from outside as well as inside.

Choose among different locking options.



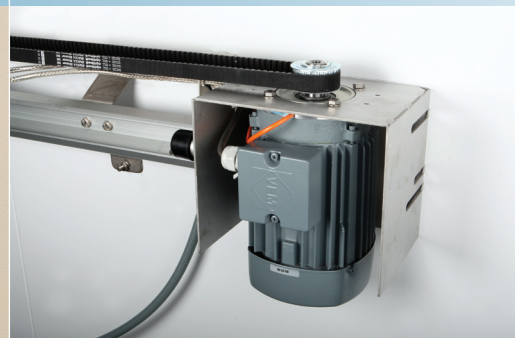
### Door frames

Door frame in aluminium (anodized) or stainless steel with integrated trace for heating cable (option).



### Automatic operation

The SCD control box is easy to operate and offers a range of parameters that can be adjusted to suit the operating mode of each individual facility (option).



### Inverter controlled motor

Automatic operation by means of tooth belt system and electrical motor with adjustable speed (option).

**The positive sealing ensures minimum loss of heat and cold, resulting in reduced energy consumption and reduced CO<sup>2</sup>-emissions.**

DAN-doors a-s  
Industrivej 19, Stilling  
DK-8660 Skanderborg  
Tel. +45 87 93 87 00  
Fax +45 86 57 32 75  
dd@dan-doors.dk  
www.dan-doors.com

